



# HINDIN

# INDUSTRIAL

## HEAVY DUTY INDUSTRIAL AIR COMPRESSORS



NEW HINDIN RANGE "UP-SPEC" with  
GENUINE FU SHENG CAST IRON HEAVY DUTY PUMPS

### SINGLE PHASE SERIES

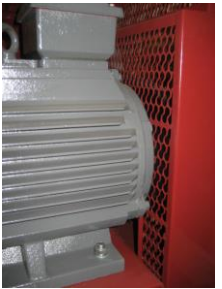
**H12** VA65 pump with 2HP motor on 60L tank. 10 amp plug

**H17** TA65 pump with 3HP motor on 70L tank. 15 amp plug

(pump spare parts refer [www.hml.co.nz](http://www.hml.co.nz) VA65 or TA65)



### FEATURES



- Genuine FuSheng Reciprocating Air Compressor Pump operating at low r.p.m. Cast iron construction. Pumps have a worldwide reputation for outstanding performance and reliability. Marketed in New Zealand by Hindin Marquip for more than 30 years.
- Superior pump design with a high strength forged steel crankshaft, low-friction roller main bearings, extra large oil reservoir, long-life piston rings, precision machined cylinders, deep directional cooling fins, robust plate-type inlet and exhaust valves, and low-noise air intakes with replaceable filter elements.
- Single phase models with IP54 compressor duty TEFC electric motor with HD capacitor and overload protection.
- Automatic Engine Control with precision German made Condor pressure switch and with soft-start unloader valve.
- Extended service life V-belt fully enclosed by impact resistant metal safety guard designed for easy maintenance access and high flow-through cooling. Fully compliant with Australia/New Zealand safety standards and regulations for industrial workplace use.
- Generously sized air receiver tank to optimise air storage efficacy. Designed and manufactured to AS/NZS1210. Thick baseplate for rigidity. Abrasive blast cleaned prior to application of three stage paint system.
- Premium grade fasteners, fittings and check valves throughout with copper piping. 12 month warranty covering manufacturing fault

### SPECIFICATIONS

Model	Pump Displacement		Free Air Delivery		Pump Speed	Engine Power	Reqd Circuit	Tank Vol.	Noise Level	Outlet Size	Weight	Dimensions (cm)		
	cfm	lpm	cfm	lpm	rpm	HP	Amps	litre	dB(A)	BSPf	Kg	L	W	H
<b>H12</b>	10.0	283	6.3	178	970	2.0	10	60	80	1/4"	79	94	39	73
<b>H17</b>	13.7	387	9.0	255	810	3.0	15	70	79	1/4"	93	109	39	78